



Outcome of October '24 Traffic Surveys

4 locations were surveyed between the 21st & 27th of October 2024.

1. Rye Hill – near Green Close
2. Southbrook – between Elder Road junction & Egdon/school junction
3. Elder Road – between Southbrook junction and Manor Farm Road junction
4. West Street – just past Southmead junction (heading West)

Surveys were conducted using laser type devices, not pressure tube devices, and thus we received no information about vehicle types/sizes.

Rye Hill

Traffic volume – 6166 vehicles per day average (3917 southbound, 2969 northbound)

Average flow – ~420 vehicles per hour 7am - 7pm

Peak flow - ~620 vehicles per hour around 5pm

Speeding vehicles – 12.2% >35 mph (752 vehicles)

2.6 % >40 mph (159 vehicles)

Note 20% of downhill traffic (northbound) >35 mph, but only 5% heading south to Wool.

Mean speed of traffic on Rye Hill is ~30mph

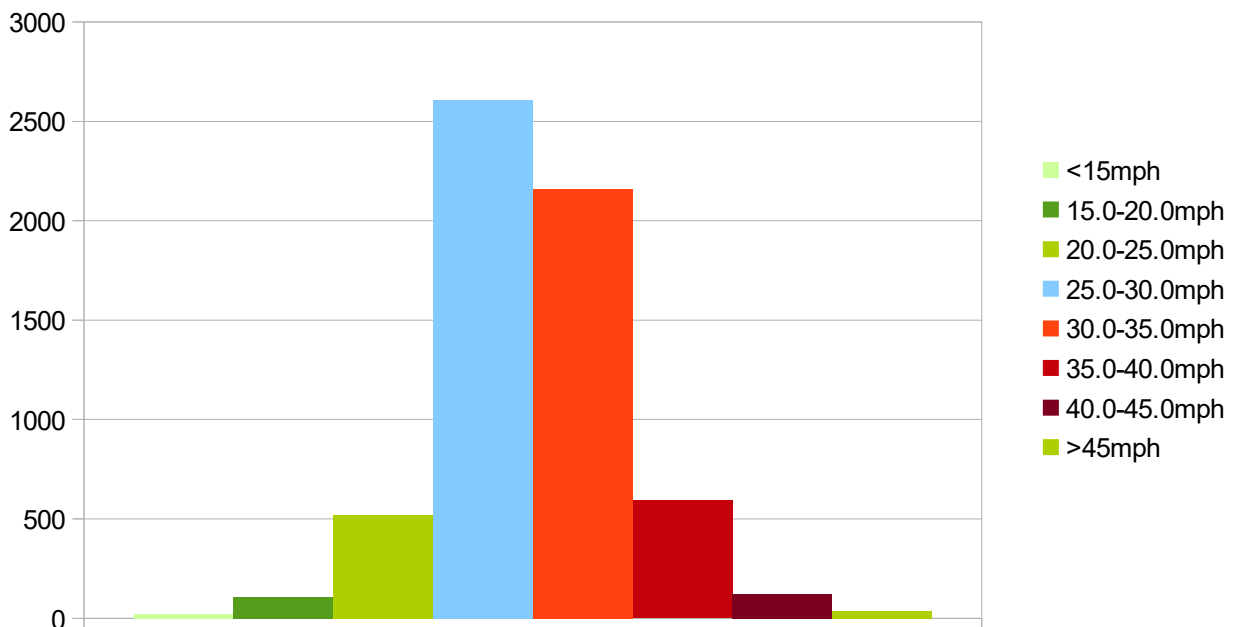


Figure 1: Rye Hill all traffic

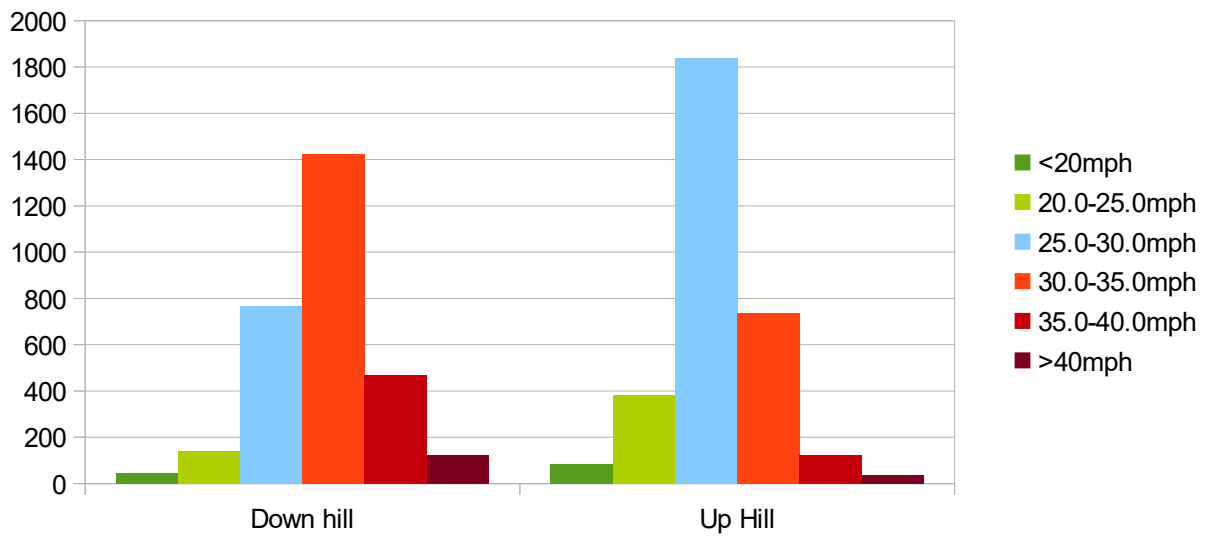


Figure 2: Rye Hill traffic by direction (Up hill = southbound)

Southbrook

Traffic volume - 6107 vehicles per day average

Average flow – ~420 vehicles per hour 7am - 7pm

Peak flow - ~620 vehicles per hour around 4pm

Speeding vehicles – 7.1% >35 mph, 436 vehicles

1.5% >40 mph, 91 vehicles

Note 12.3% of northbound traffic >35 mph, but only 3% heading South towards Wool.

Mean speed of traffic on Southbrook is ~28mph

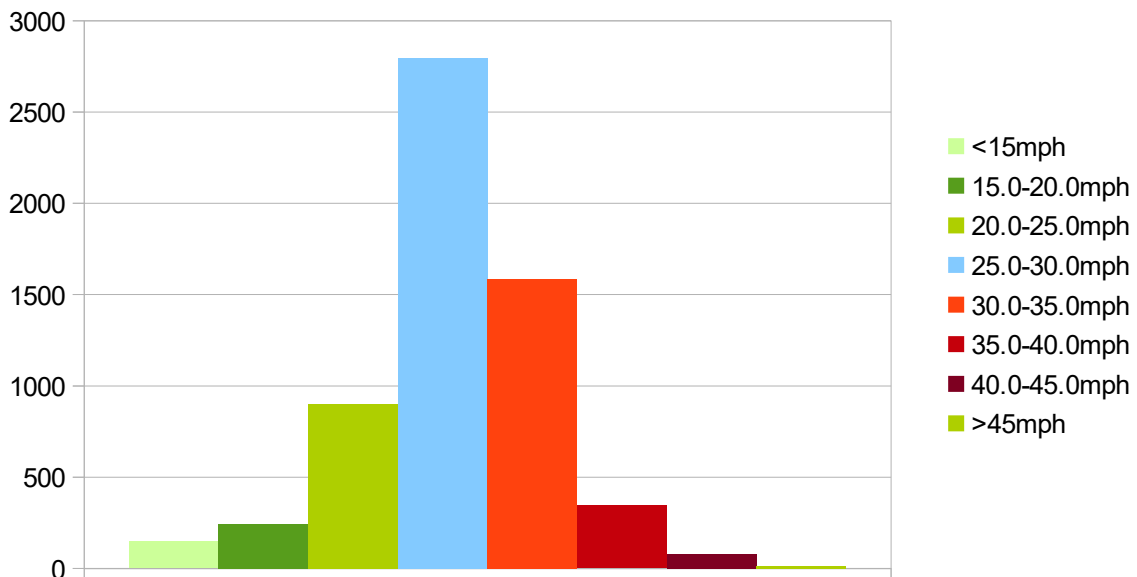


Figure 3: Southbrook all traffic

Elder Road

Traffic volume - 1022 vehicles per day average (561 eastbound, 461 westbound)

Average flow - ~75 vehicles per hour between 8am-6pm

Peak flow - 100 vehicles per hour around 5pm

Speeding vehicles – 4.5% >35 mph eastbound (25 vehicles)

7.8% >35mph westbound (36 vehicles)

Much traffic well under 30 – 68% of eastbound, 78% of westbound

Mean speed of traffic on Elder Road is ~25mph

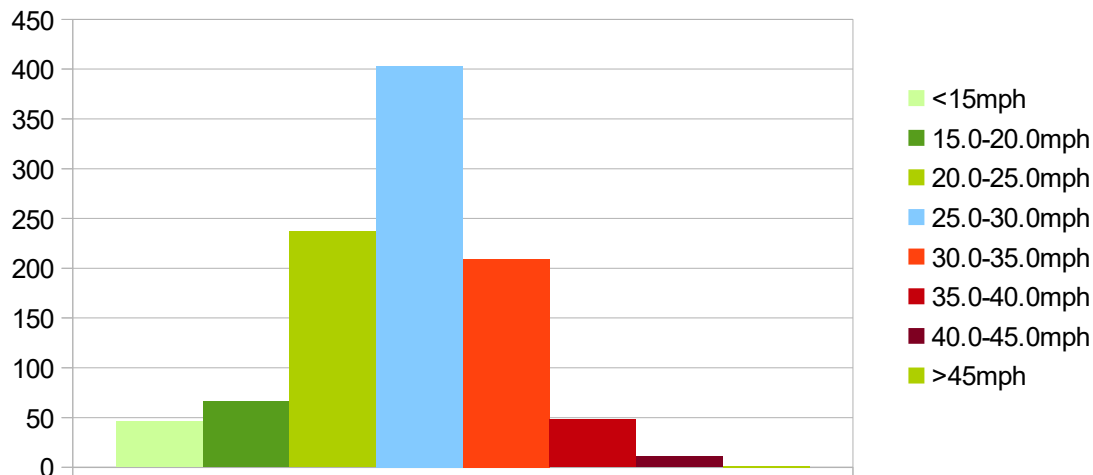


Figure 4: Elder Road all traffic

West Street

Traffic volume – 1568 vehicles per day average (741 eastbound, 827 westbound)

Average flow - ~110 vehicles per hour 7am – 6pm

Peak flow - 140 vehicles per hour around 5pm

Speeding vehicles – virtually no traffic over 30mph

Most traffic under 20mph – 27% >20mph eastbound, 15% >20mph westbound

Mean speed of traffic on West Street <20mph.

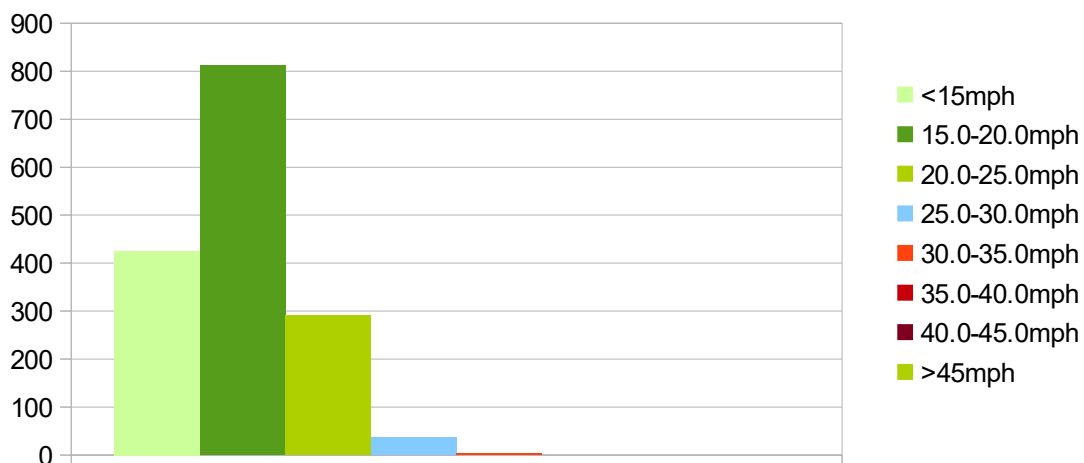


Figure 5: West Street all traffic